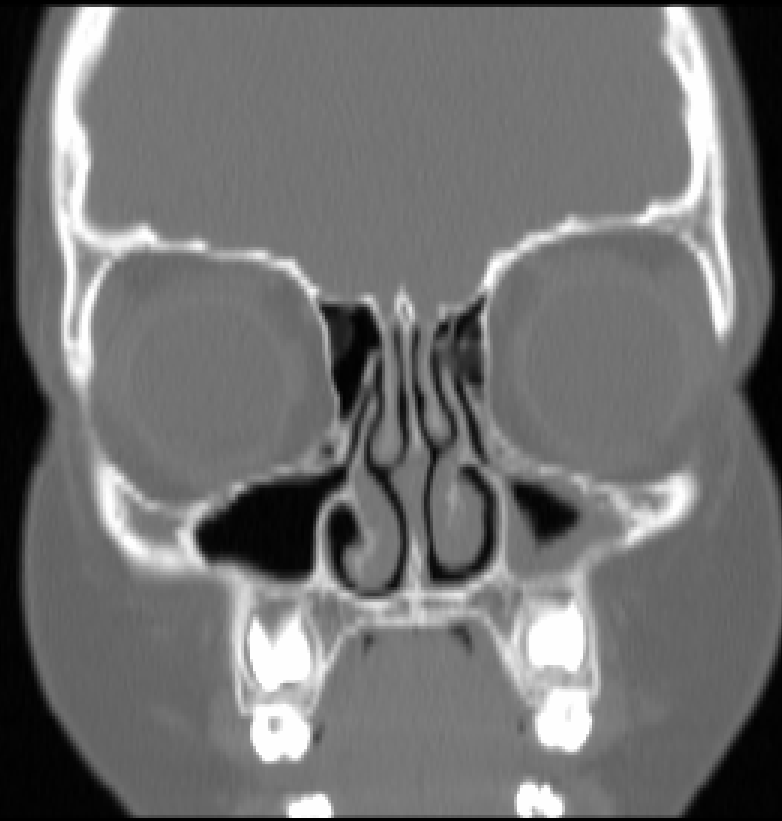


GS: Initial visit 6/14/06

- 8 yo WF with recurrent sinusitis since age 3 years
- Colds never go away but progress into persistent cough → sinusitis
 - Antibiotics prescribed for 1-2 week course which clears symptoms
 - Cough present only during sinus infections per mom (without other triggers) but has been treated with Flovent by prior allergist

GS

- Kindergarten
 - Cough for 2 consecutive weeks every month, responsive to antibiotics
- 2nd grade particularly bad
 - At least 6 sinus infections
 - On constant antibiotics from 12/05 to 3/06 for persistent cough
 - No cough during summer months



GS

- PMH (including infection history) and birth history non-contributory
- Family history
 - Mom with AR on IT
 - Paternal uncle and PGF with asthma
- Social history
 - +dog
 - no smokers at home

GS

- Prior work-up: sweat test normal
- ROS: sneeze, congestion, salute, sniff, rhinorrhea, throat clearing, post-nasal drip; cough (day/night) with sinusitis only
- Meds: Nasonex, Zyrtec, albuterol PRN

- Exam: significant only for edematous inferior turbinates (pink) with clear mucus

GS work-up

- Spirometry: FEV1 97%
 - 2% improvement post-bronchodilator
- Skin testing to 16 environmental allergens: all negative with +histamine
- CXR: normal
- CBC/diff, ESR, chem 8, U/A normal

GS work-up

- IgG 1170 (normal subclasses)
- **IgA <6.67**
- IgM 116
- IgE <2.0
- Tetanus titer 0.42 (positive)
- Pneumococcal titers: geometric mean of 712;
11/12 serotypes >350
- Flow cytometry normal

Impression

- Selective IgA deficiency presenting with recurrent acute and chronic sinusitis
- Non-allergic rhinitis
- Possible mild intermittent asthma

Plan

- Selective IgA deficiency:
 - Consider prophylactic antibiotics during school year
 - Treat future sinus infections aggressively
 - Check immunoglobulins every 6 months
 - Check anti-IgA antibody and baseline celiac panel

Plan

- Non-allergic rhinitis:
 - Continue Nasonex but stop antihistamines
 - Continue sinus irrigations
- Possible mild intermittent asthma:
 - Continue albuterol PRN
 - Stop use of Flovent
 - Repeat spirometry every 6-12 months